

Focus Flex L7



Light Efficiency:



Light Quality:



Color Temperature:



Output: 2386 lm

Peak: 27075 cd

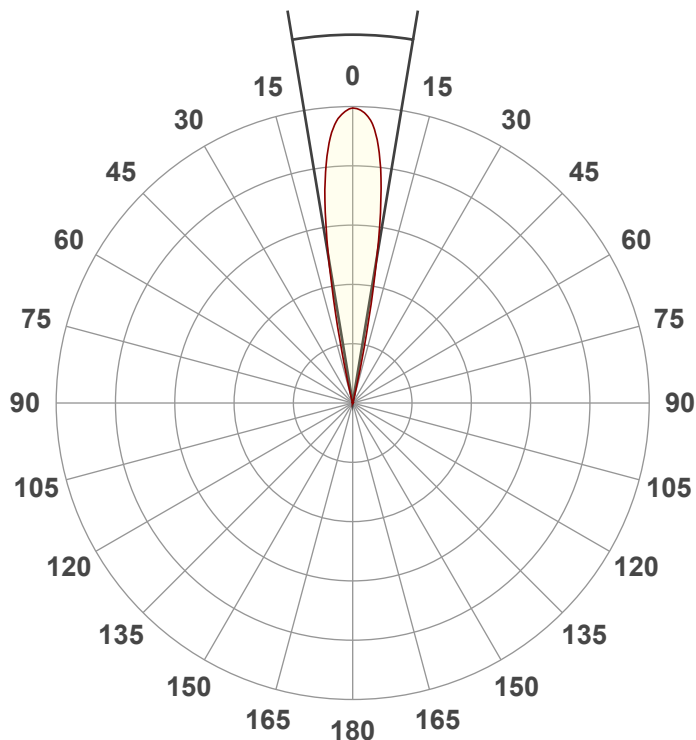
Power: 214.9 W

PF: 0.98



Beam Angle

18.9°



Test:

5200K Zoom 50%

Date:

10/14/2022

Note:

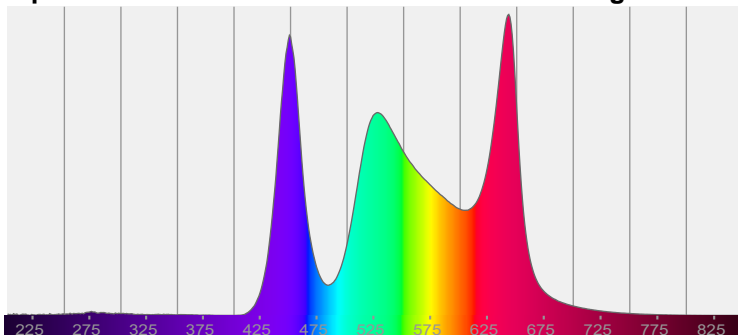
CCT @ 234



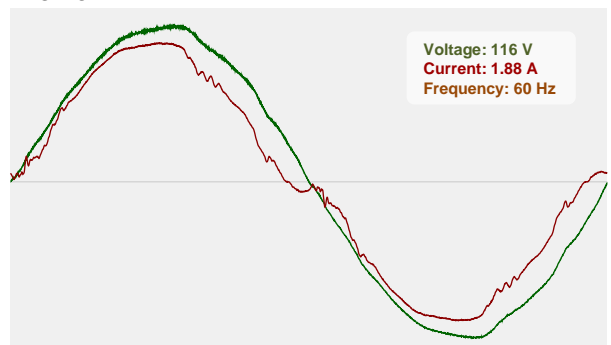
CIE 1931
x: 0.338
y: 0.352

Spectra

Dominant Wavelength: 578nm

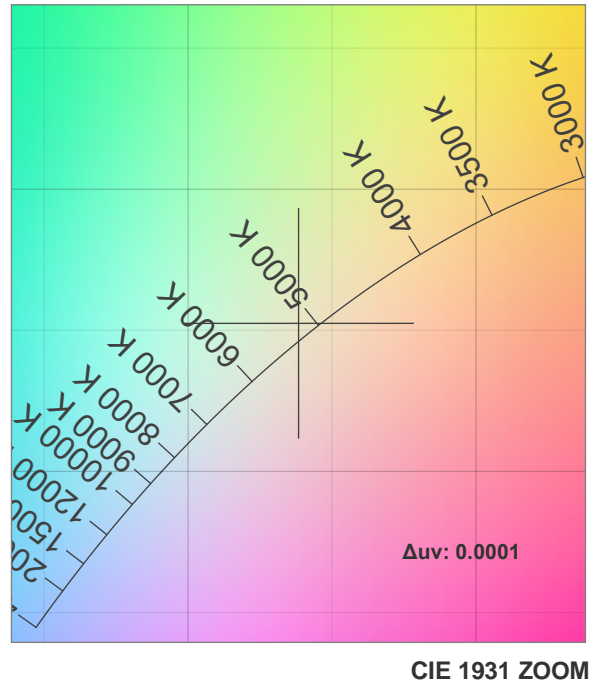
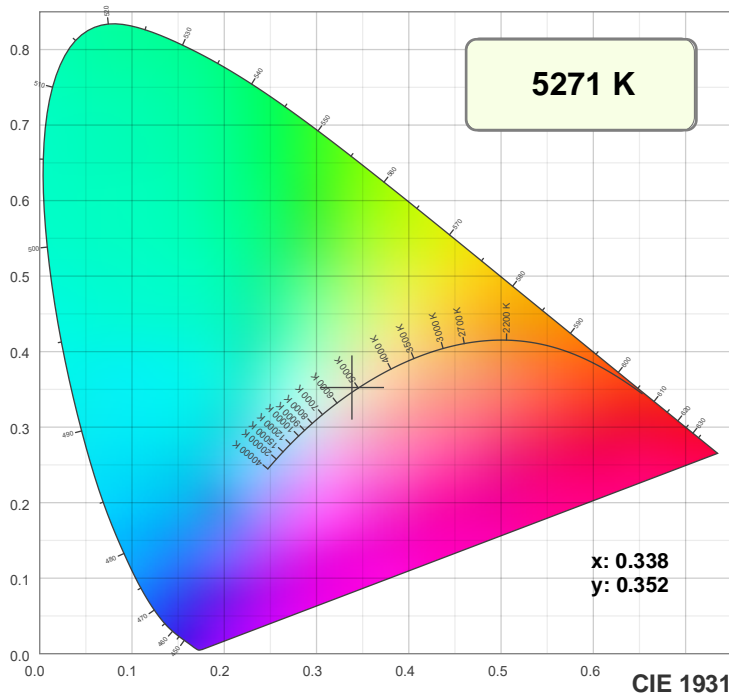


Power

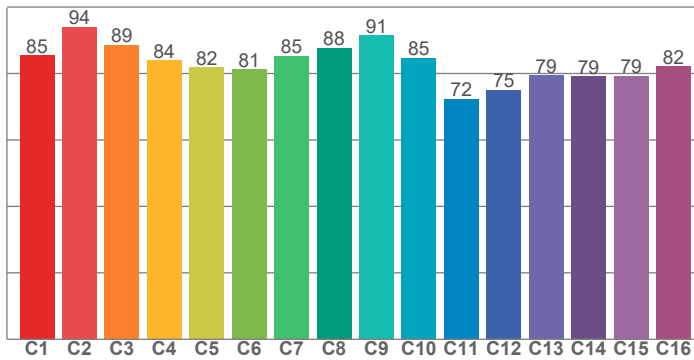


Voltage: 116 V
Current: 1.88 A
Frequency: 60 Hz

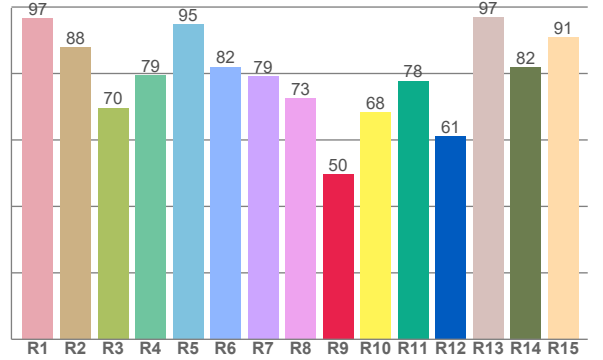
Color Details



TM30: 83.5



CRI: 82.8 (R1-R8)



CRI R values, only R1-R8 are used to calculate final CRI value

R1	R2	R3	R4	R5	R6	R7	R8	R9	R10	R11	R12	R13	R14	R15
96.6	87.9	69.7	79.5	94.7	82.0	79.0	72.6	49.7	68.3	77.8	61.1	96.9	81.9	90.9

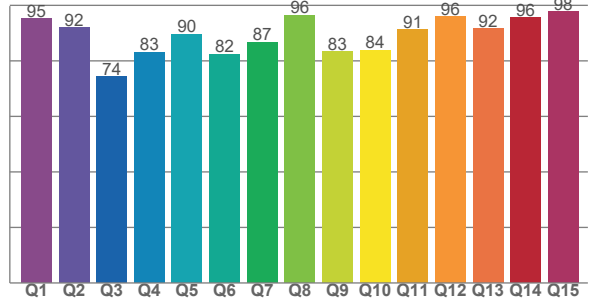
TM30 C values, 16 binned values out of total of 99 C values

C1	C2	C3	C4	C5	C6	C7	C8	C9	C10	C11	C12	C13	C14	C15	C16
85.5	93.9	88.6	83.9	81.9	81.2	85.3	87.7	91.4	84.7	72.3	75.1	79.4	79.2	79.3	82.1

CQS Q values

Q1	Q2	Q3	Q4	Q5	Q6	Q7	Q8	Q9	Q10	Q11	Q12	Q13	Q14	Q15
95.2	92.0	74.4	83.1	89.7	82.4	86.7	96.4	83.2	83.8	91.3	96.0	91.7	95.6	97.8

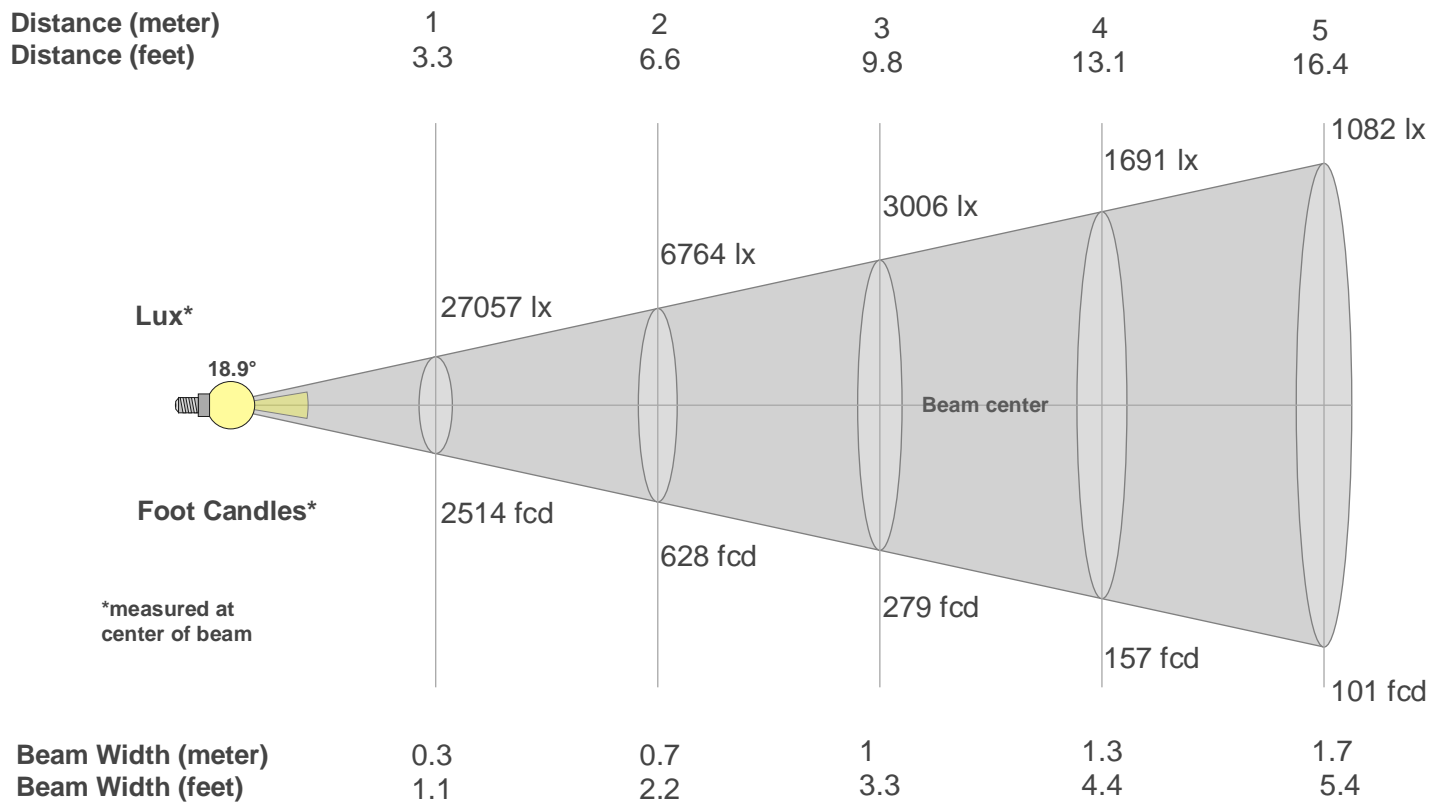
CQS: 87.4



Color Parameters

Color Temperature	Color Rendering Index	Red Component	Color Fidelity	Color Gamut	Color Quality Scale	Color Coordinate CIE 1931	Color Coordinate CIE 1931	Color Coordinate	Color Coordinate	Color Deviation from Black Body
CCT	CRI	CRI R9	TM30 Rf	TM30 Rg	CQS	x	y	u	v	Δuv
5271 K	82.8	49.7	83.5	109.7	87.4	0.338	0.352	0.207	0.323	0.0001

Beam Details



Beam Intensities from 1-20m

m	1	2	3	4	5	6	7	8	9	10	11	12	13	14	15	16	17	18	19	20
ft	3.3	6.6	9.8	13.1	16.4	19.7	23	26.2	29.5	32.8	36.1	39.4	42.7	45.9	49.2	52.5	55.8	59.1	62.3	65.6
lx	27057	6764	3006	1691	1082	752	552	423	334	271	224	188	160	138	120	106	94	84	75	68
fcd	2513.7	628.4	279.3	157.1	100.5	69.8	51.3	39.3	31	25.1	20.8	17.5	14.9	12.8	11.2	9.8	8.7	7.8	7	6.3

Intensities in 0° C-plane

0°	1°	2°	3°	4°	5°	6°	7°	8°	9°	10°	11°	12°	13°	14°	15°	16°	17°	18°	19°
27.1K	26.9K	26.6K	26.1K	25.3K	24.2K	22.6K	20.6K	18.2K	15.0K	11.4K	7.8K	4.7K	2.4K	0.9K	0.3K	0.1K	0.0K	0.0K	0.0K
100%	99%	98%	96%	93%	89%	84%	76%	67%	55%	42%	29%	17%	9%	3%	1%	0%	0%	0%	0%

Intensities in 90° C-plane

0°	1°	2°	3°	4°	5°	6°	7°	8°	9°	10°	11°	12°	13°	14°	15°	16°	17°	18°	19°
27.1K	26.9K	26.6K	26.1K	25.3K	24.2K	22.6K	20.6K	18.2K	15.0K	11.4K	7.8K	4.7K	2.4K	0.9K	0.3K	0.1K	0.0K	0.0K	0.0K
100%	99%	98%	96%	93%	89%	84%	76%	67%	55%	42%	29%	17%	9%	3%	1%	0%	0%	0%	0%

Intensities in 180° C-plane

0°	1°	2°	3°	4°	5°	6°	7°	8°	9°	10°	11°	12°	13°	14°	15°	16°	17°	18°	19°
27.1K	27.0K	26.7K	26.3K	25.7K	24.6K	23.1K	21.2K	18.4K	15.2K	11.3K	7.7K	4.5K	2.0K	0.8K	0.2K	0.1K	0.0K	0.0K	0.0K
100%	100%	99%	97%	95%	91%	85%	78%	68%	56%	42%	28%	17%	7%	3%	1%	0%	0%	0%	0%

Intensities in 270° C-plane

0°	1°	2°	3°	4°	5°	6°	7°	8°	9°	10°	11°	12°	13°	14°	15°	16°	17°	18°	19°
27.1K	27.0K	26.7K	26.3K	25.7K	24.6K	23.1K	21.2K	18.4K	15.2K	11.3K	7.7K	4.5K	2.0K	0.8K	0.2K	0.1K	0.0K	0.0K	0.0K
100%	100%	99%	97%	95%	91%	85%	78%	68%	56%	42%	28%	17%	7%	3%	1%	0%	0%	0%	0%

Beam Angle 50%	Field Angle 10%	Cutoff Angle 2,5%	Intensity Ratio in 120° Cone	Intensity Ratio in 90° Cone
18.9°	25.6°	28.5°	100.0%	100.0%